



Prophy-Mate **neo**

# Prophy-Mate **neo**

**Enhanced Prophy-Mate neo unites form and functionality for easier use. Excellent weight balance and a lightweight, compact powder chamber make Prophy-Mate neo comfortable to hold, while the original NSK handpiece connection swivels 360° even under strong air pressure. Effortless operation shortens time for treatment of plaque and stains. 60° and 80° nozzles are available.**

## Applications

- Removal of plaque and discolouration
- Etching of enamel, dentine, and porcelain prior to bonding
- Preparation for pit and fissure sealant

## Advantages

- Sturdy and reliable
- Simple to operate
- Easy maintenance
- Quick connect to major turbine couplings
- Selectable choice of 60° and 80° nozzles



# Prophy-Mate neo

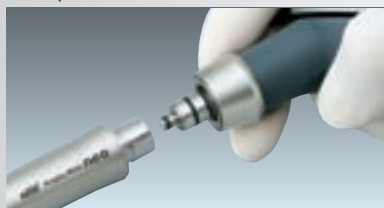
## Air Powered Tooth Polishing System

### Improved Polishing Power



With NSK original twin nozzles, greater polishing power is realised. With powerful jet, cleaning time is greatly shortened thus reduces treatment time.

### Simple One-touch Connection



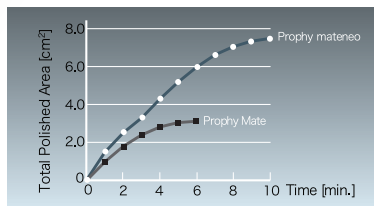
New Prophy-Mate neo is designed for one-touch attachment directly to NSK couplings and major brands' air turbine handpiece couplings. The handpiece also can be attached to the powder case with one-touch operation.

### Ergo-Comfort Design



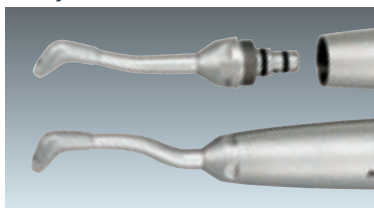
Lightweight, compact design and well-considered weight balance enable easy handling for minimised hand and wrist fatigue, helping to ensure thorough treatment.

### Stable Power



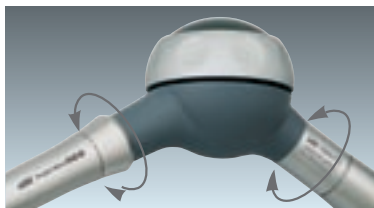
Thanks to the powerful jet of twin nozzles, Prophy-Mate neo embodies stable polishing power. Since the strong polishing power can be maintained, effective treatment is realised.

### Easy Detachable Nozzles with 60° and 80°



Selectable 60° and 80° nozzles maximise the cleaning ability. 60° nozzle works especially well for molar area and occluding surface and 80° nozzle for anterior tooth.

### Smooth, Easy 360° Swivel



Twin joints rotate smoothly 360° for easy operability, responding flexibly to minute fingertip movements with effortless adjustment of the nozzle angle.

## Prophy-Mate neo Complete System

	MODEL	ORDER CODE		
	PMNG-PTL-P	Y135029		NSK Coupling
	PMNG-KV-P	Y135030		KaVo® LED Coupling
	PMNG-SR-P	Y135031		Sirona® LED Coupling
	PMNG-WH-P	Y135032		W&H® Roto Quick
	PMNG-BA-P	Y135033		Bien-Air® Unifix®
	PMNG-M4-P	Y135034		Connect direct to the handpiece tubing MIDWEST
	PMNG-B2-P	Y135035		Connect direct to the handpiece tubing BORDEN

Contents • Handpiece with 60° nozzle head • Powder case • Replacement nozzle head 80° • 5pcs. x 15g sachets of FLASH pearl cleaning powder • Maintenance kit

\*Do not wash the powder case or the powder case's cap in a thermo-disinfector.



The handpiece can be washed in the thermodisinfector.



Autoclavable up to 135°C

•KaVo® is a registered trademark of Kaltenbach & Voigt GmbH & Co. •Sirona® is a registered trademark of Sirona Dental Systems GmbH. •W&H® is a registered trademark of W&H Dentalwerk Bürmoos GmbH. •Bien-Air® and Unifix® are registered trademarks of Bien-Air Dental S.A.



# FLASH pearl

Sparkling Results Every Time

## Advantages

- Powerful cleaning
- Quick results
- Soft & Gentle
- Sodium-free natural taste
- Biodegradable and non-clogging
- Available for all other manufacturers' air polishing systems



MODEL FLASH pearl  
ORDER CODE Y900693

- Stylishly packaged in a handy, original box
- Contains 100 x 15 gms sachets

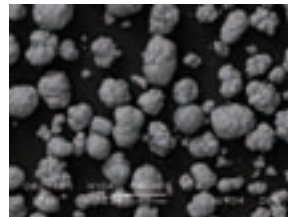


MODEL FLASH pearl (Bottle)  
ORDER CODE Y900698

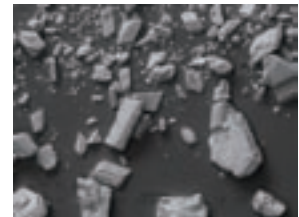
- 4 bottle packed in a box
- Comes with a measuring cup for your convenience
- Each bottle contains 300 g

## Spherical granules remove residues from every corner

FLASH pearl granules are small and spherically shaped compared to particles of sodium bicarbonate powder. This means more contact and better access to clean all target areas effectively. A wider working angle also provides greater treatment safety.

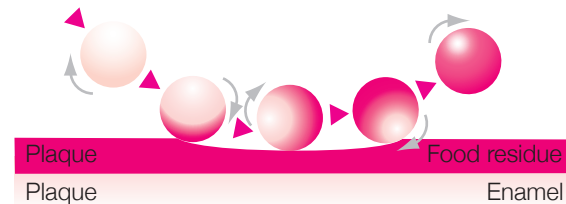


Calcium



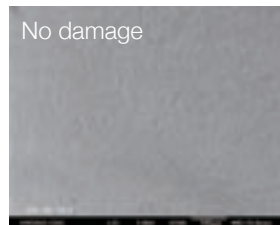
Conventional Sodium Bi-Carbonate powder

## A New Effective Cleaning System!



## FLASH pearl roll smoothly over tooth surfaces

The spherical shape of FLASH pearl gives a smooth finish to tooth surfaces compared to the effects of the sharper-edged particles of sodium bicarbonate. FLASH pearl leave teeth sparkling without damaging dental enamel.



No damage  
FLASH pearl avoids surface damage



Enamel damage  
Conventional Bi-Carbonate is aggressive



Prophy-Mate **neo**